



Capture of Methane and Utilization

Chitale Dairy

12 Sep 2008

Capture of Methane and Utilization

- Chitale Dairy ETP handle about 8 to 10 Lac Lits of Dairy Effluent per day.
- Feed COD varies from 1200 ppm -2100 ppm
- Needs self sustained ETP
- Want to use all recycled water for irrigation
- Environmentally safe system

Capture of Methane and Utilization

Solution

- 1) Bio Digester
- 2) DAF
- 3) Anaerobic Digester
- 4) Secondary Clarifier
- 5) Sand filtration
- 6) Carbon filtration
- 7) Decanter

Capture of Methane and Utilization

Results

- 1) 240 -400 m³ Methane Generation
- 2) 25 to 50 ppm BOD of treated water
- 3) 50 to 100 ppm COD of treated water
- 4) 800 KG of decanted solid sludge per day
- 5) Methane 75 % in Biogas

BIO DIGESTER



Capture of Methane and Utilization Gas Holder



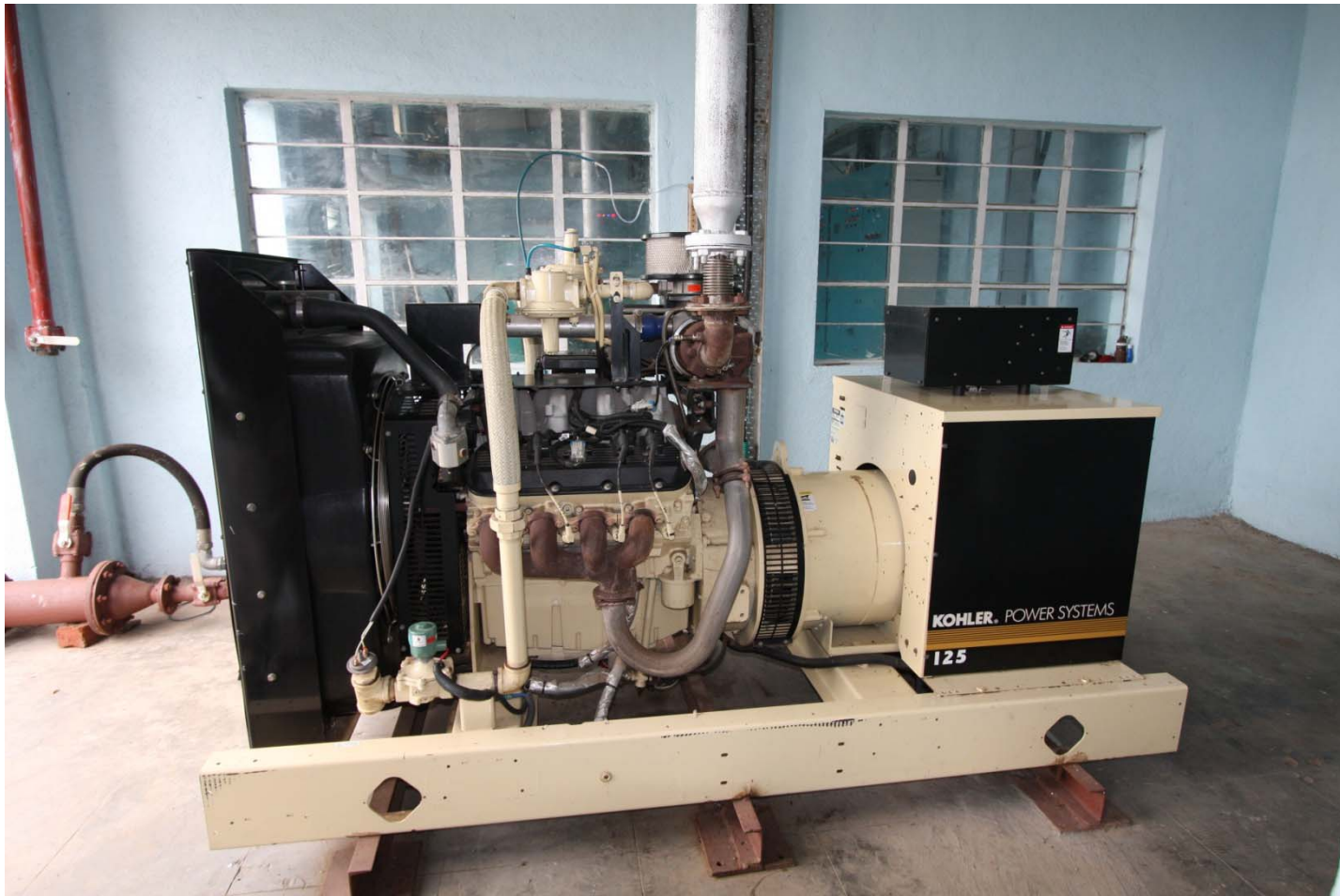
Capture of Methane and Utilization

Electrical Distribution



Capture of Methane and Utilization

Kohler Gas Generator



Capture of Methane and Utilization

DAF

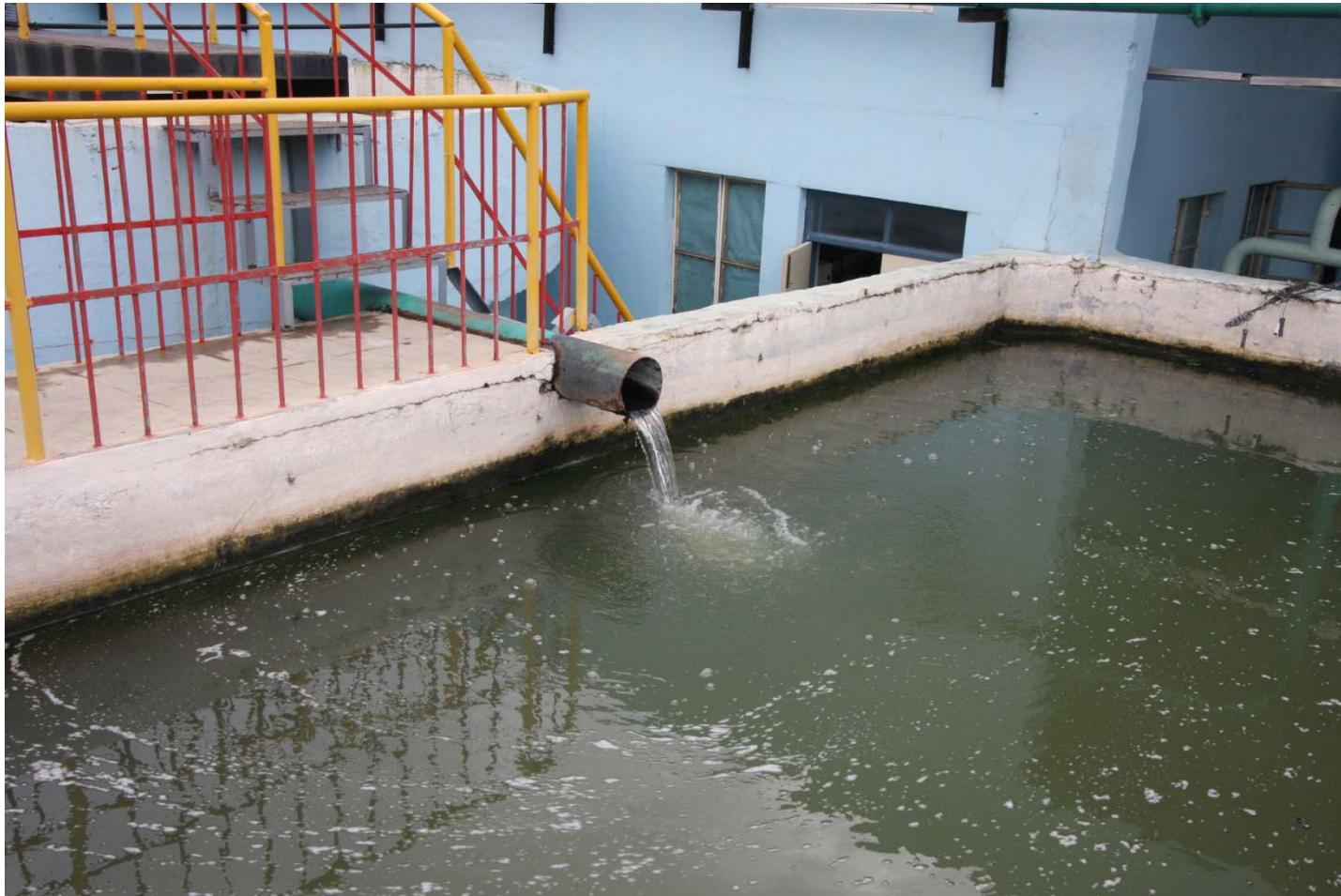


Capture of Methane and Utilization Decanter



Capture of Methane and Utilization

Bio Digester



- Thank you.