

Agriculture

Item Details	Present	Future
Villages	2000	8000
Land hectare	.040 million	0.16 million
Beneficiaries	.1 million	.4 million
Potential tons/year	20,000	80,000

WATERSHED PLUS SUSTAINABLE AGRICULTURE



Percolation tank built by the community



Wastelands development



Improvement in agricultural production



Tree based farming



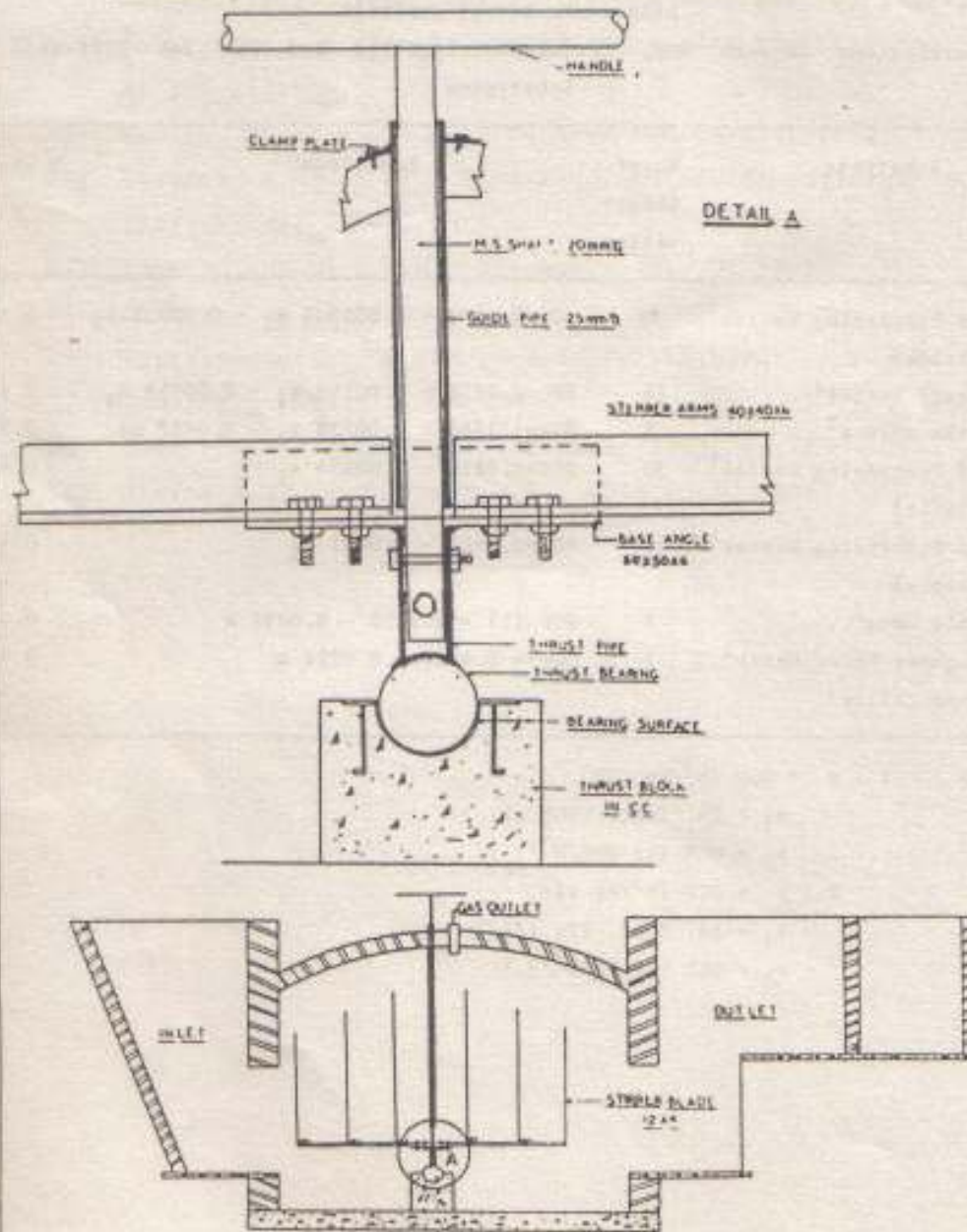
13 13:17

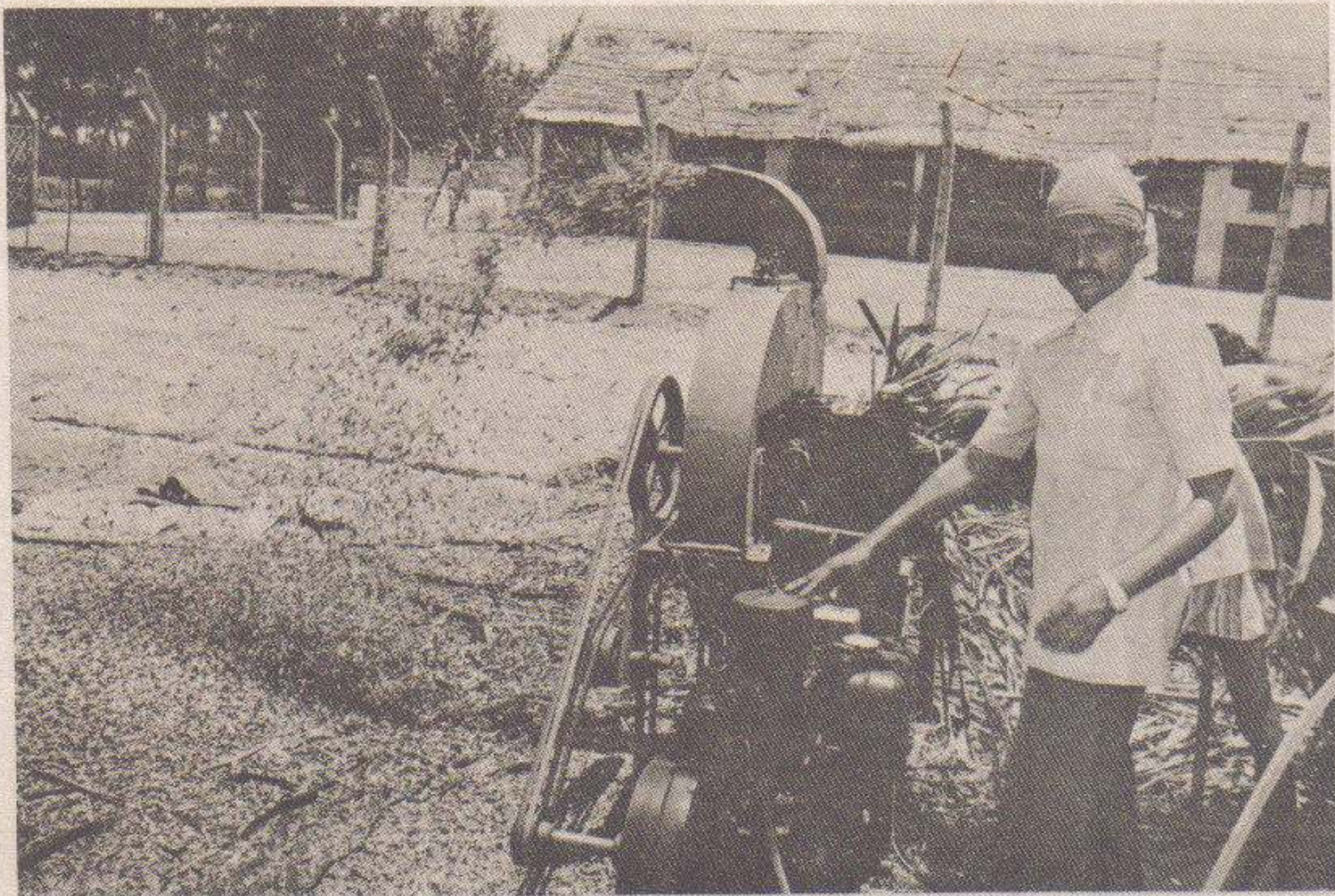
Integrated Watershed Program

Item Details	Present	Future
Units	150	1500
Land covered	0.4 million	1.5 million
Beneficiaries	.1 million	3.7 million
Estimated potential Tons/Yr.	20,000	80,000

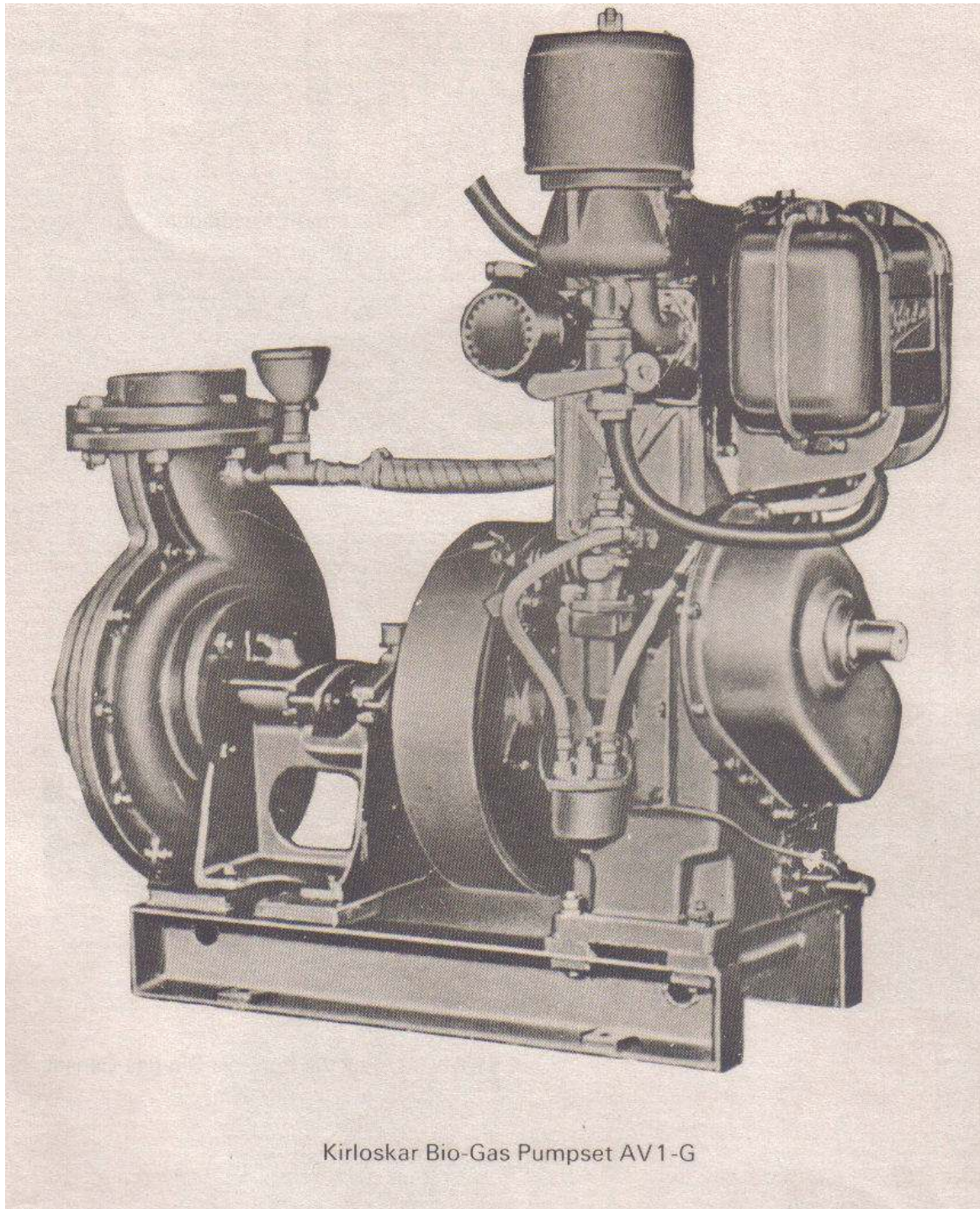


THE BHARATIYA AGRO INDUSTRIES FOUNDATION, URULI KANCHAN.
DETAILS OF STIRRER ASSEMBLY FOR JANATA TYPE DIGESTER

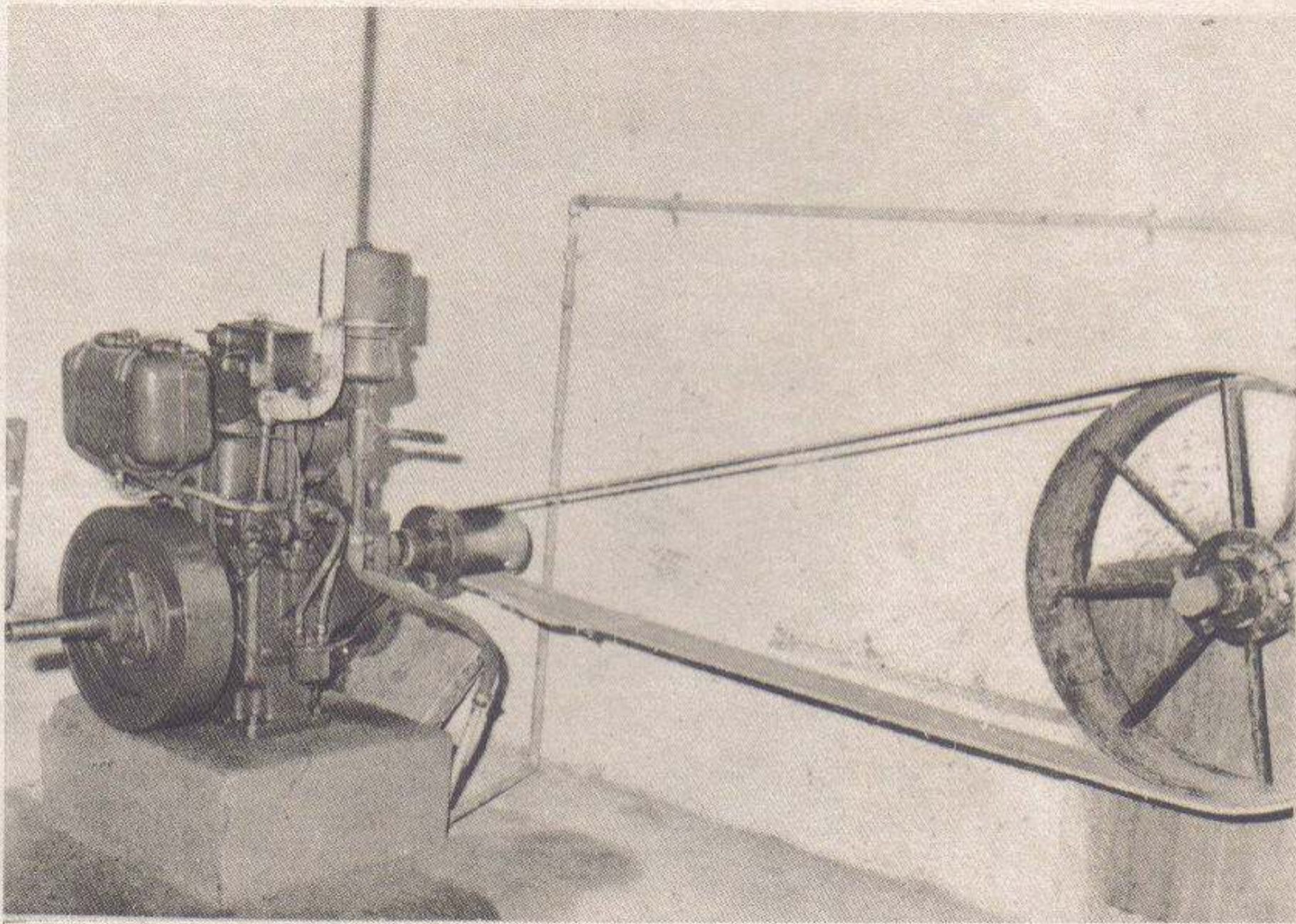




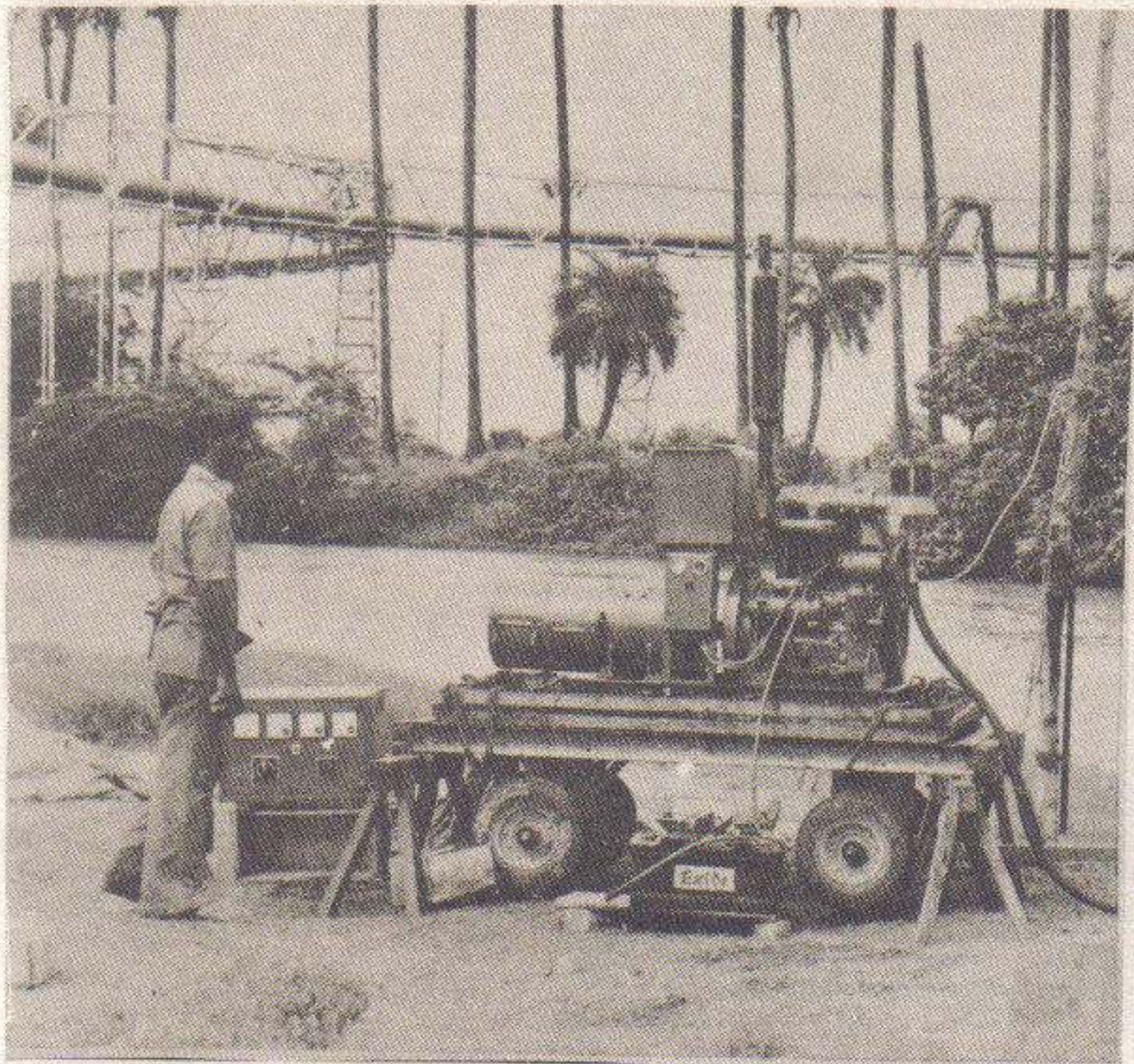
A Chaff-Cutter Operating on Biogas Engine



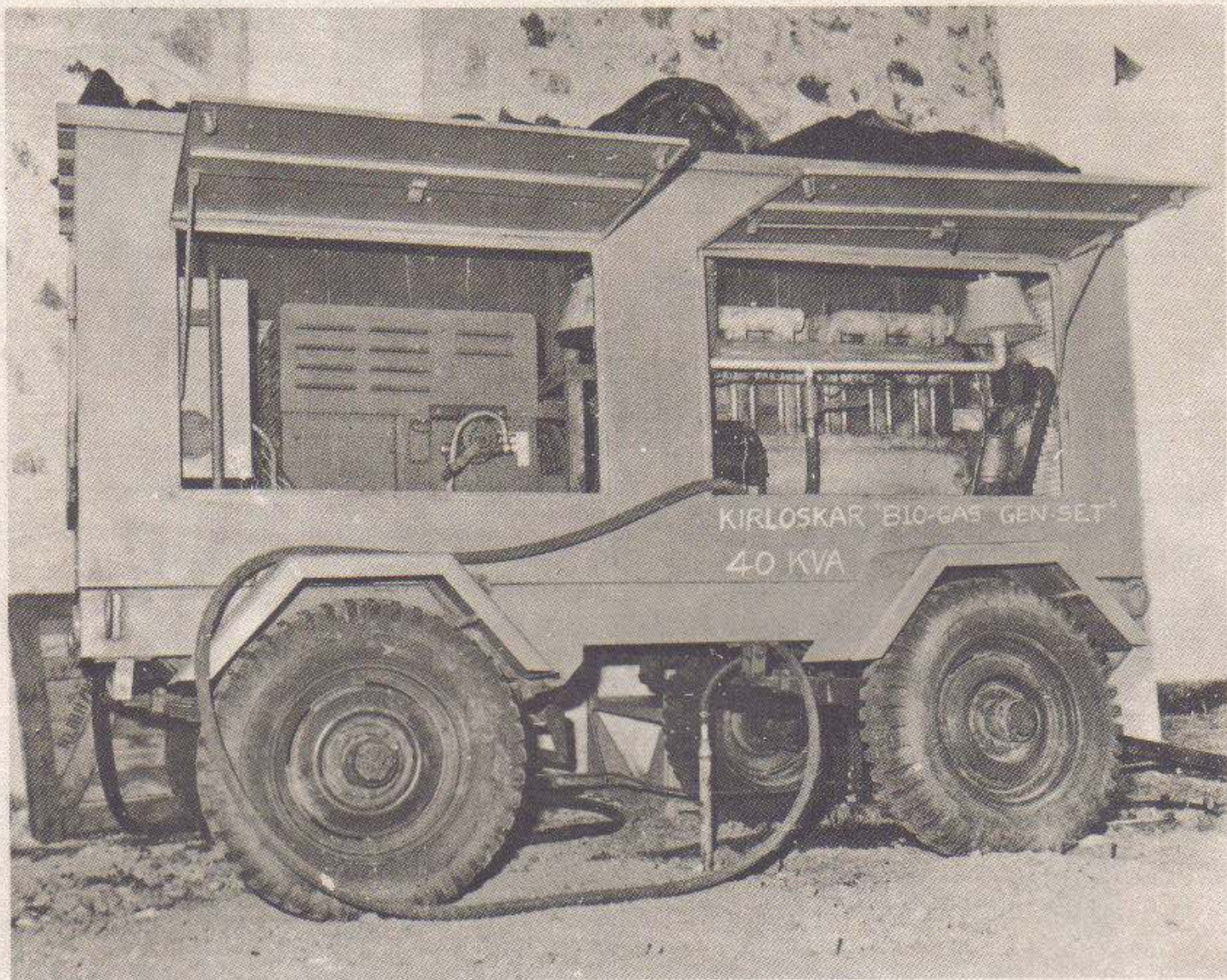
Kirloskar Bio-Gas Pumpset AV1-G



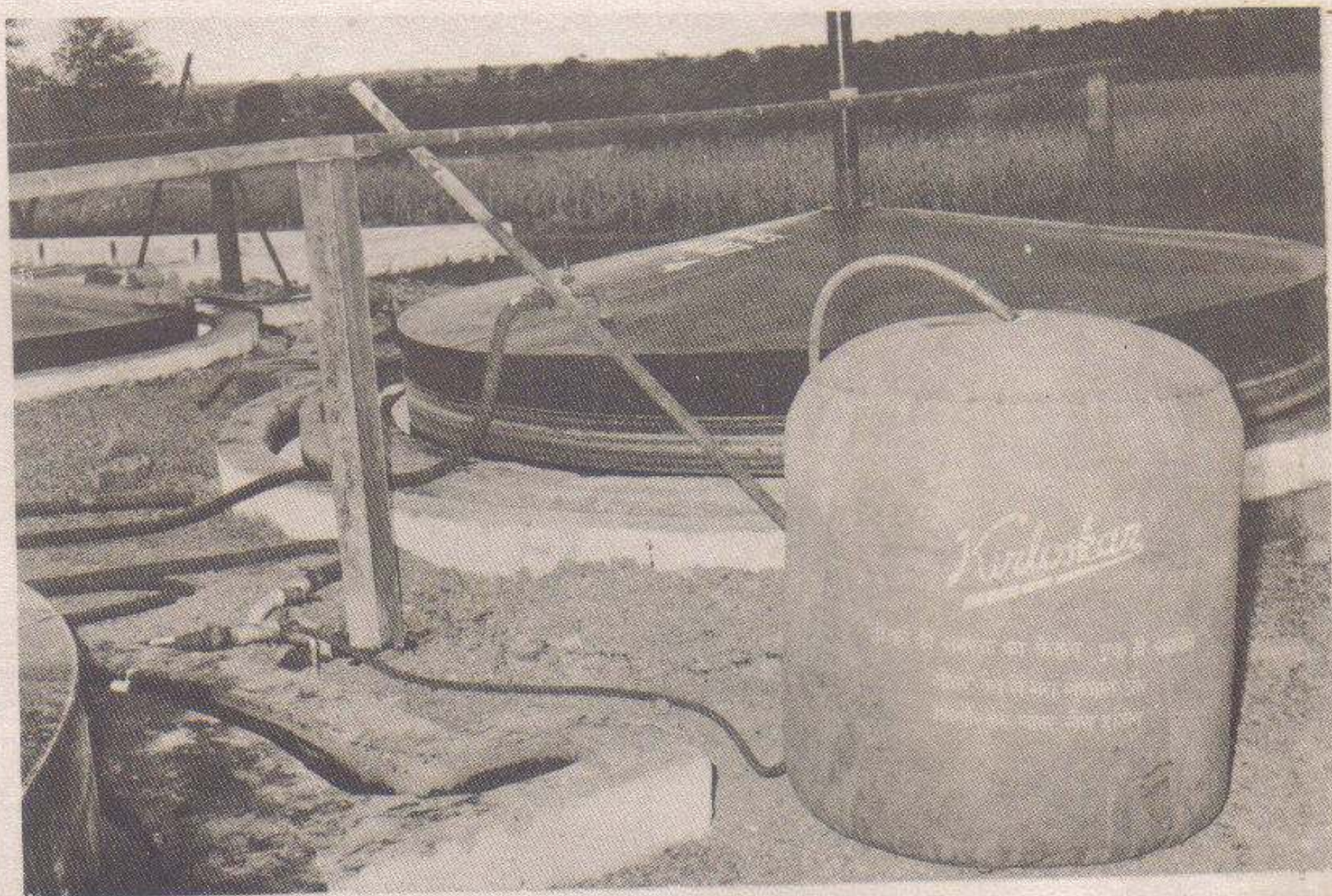
Belt drive application for Thresher, Chaff Cutter etc.



A 15 KVA genset being operated on Kirloskar RDA2 Biogas Engine

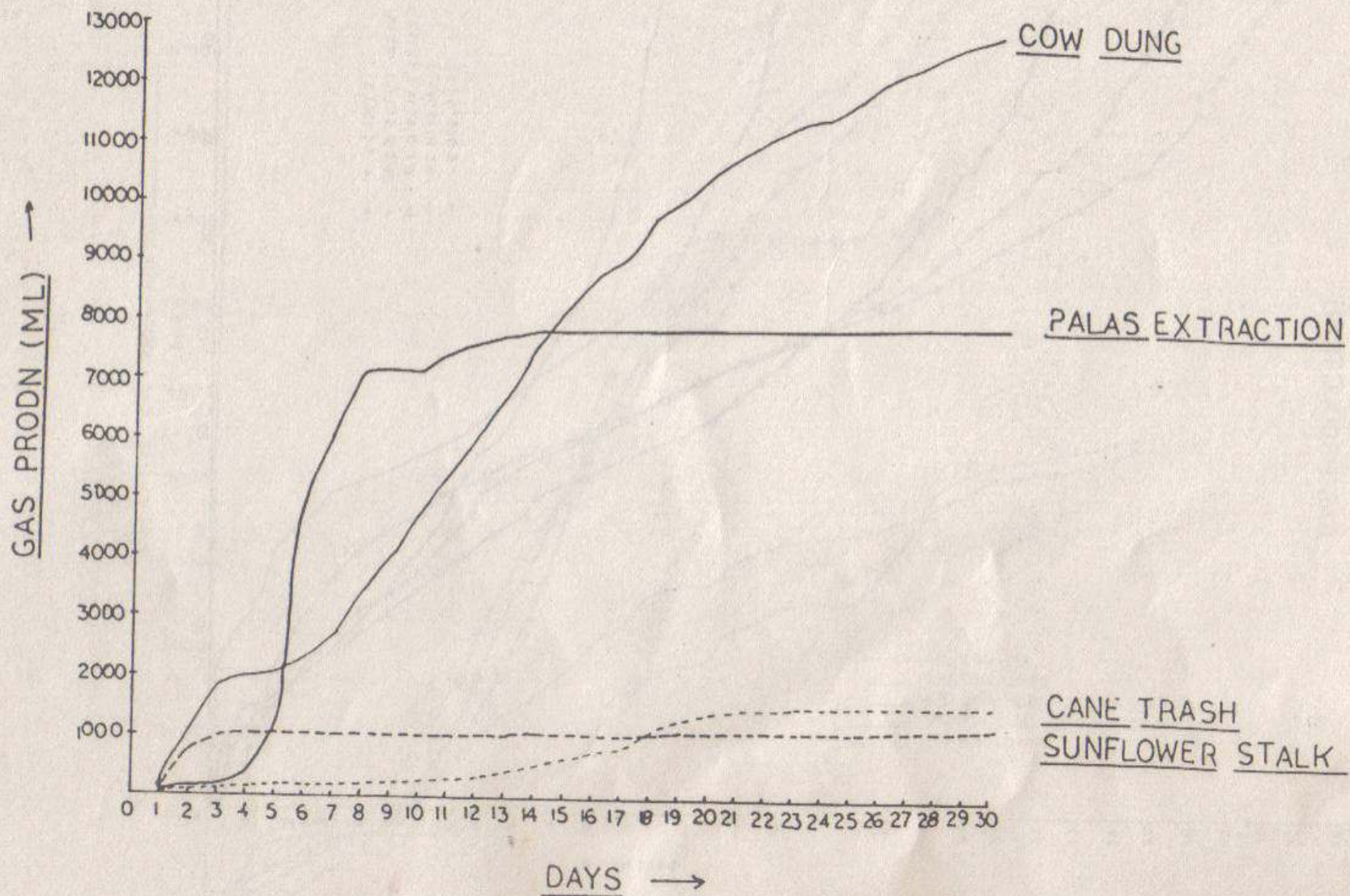


RDA-6G/40 KVA Portable Bio-gas Genset

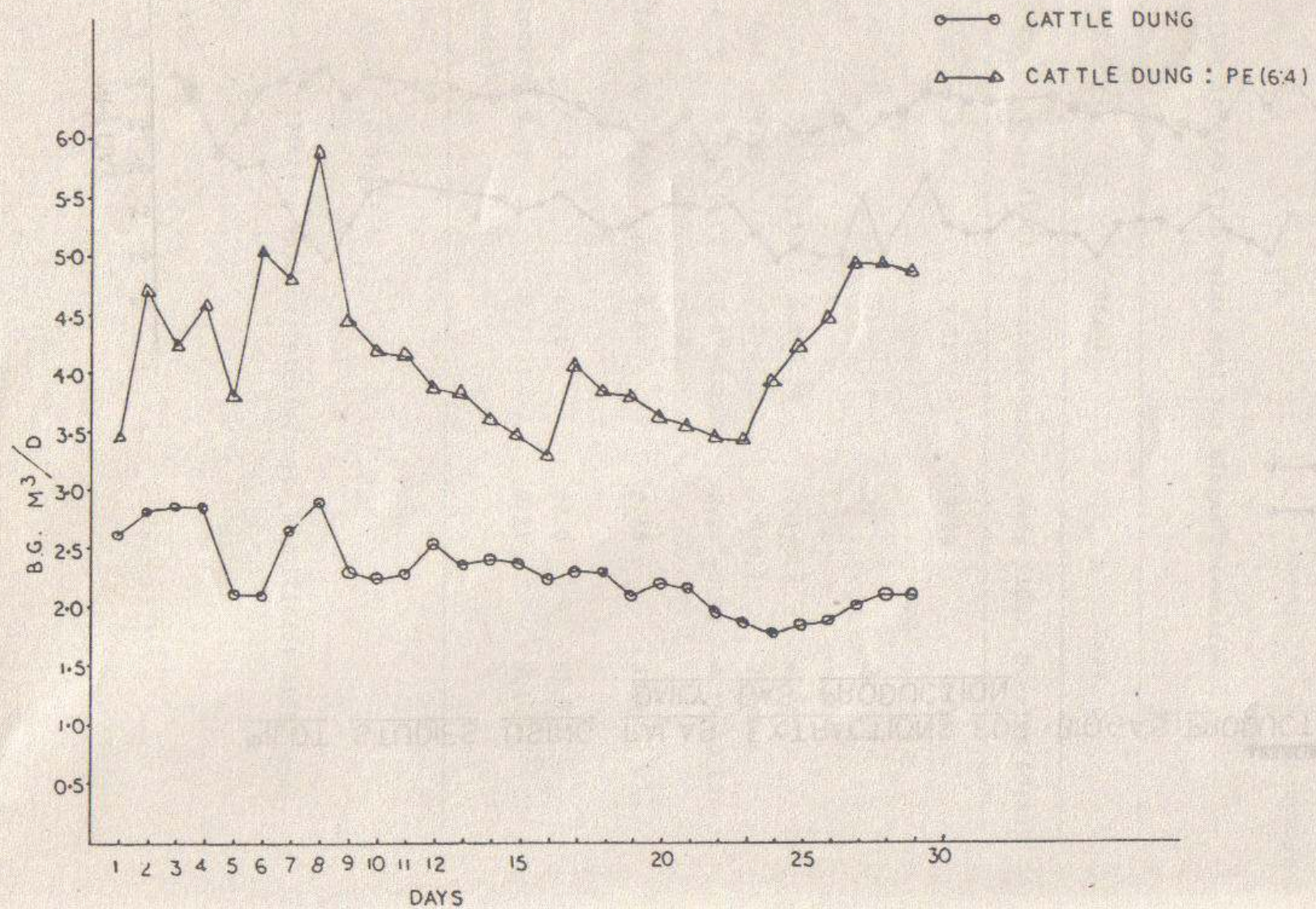


Filling up the balloon with Biogas under normal pressure

BATCH DIGESTION OF DIFFERENT SUBSTRATES (10% T.S.)



PILOT STUDIES USING PALAS EXTRACT FOR BIOGAS PRODUCTION
(40% INCLUSION) DAILY GAS PRODUCTION



An example of a rural institutional electricity availability status

Sr. No.	Place	Requirement	Availability
1.	BAIF Central Research Station	400 KVA	360 KVA
2.	Nature Cure Center	62.5 KVA	50 KVA
3.	Community Health Research Center	24 KVA	19 KVA

SUGGESTIONS

- Vast potential of the rural area needs tapped.
- Limitations of institutional models as commercial approach need validation.
- Village or community level biomethanation models need arrived at.
- Search for potential substrates and their combinations can lead to biomethanation of economic value.

THANK YOU